

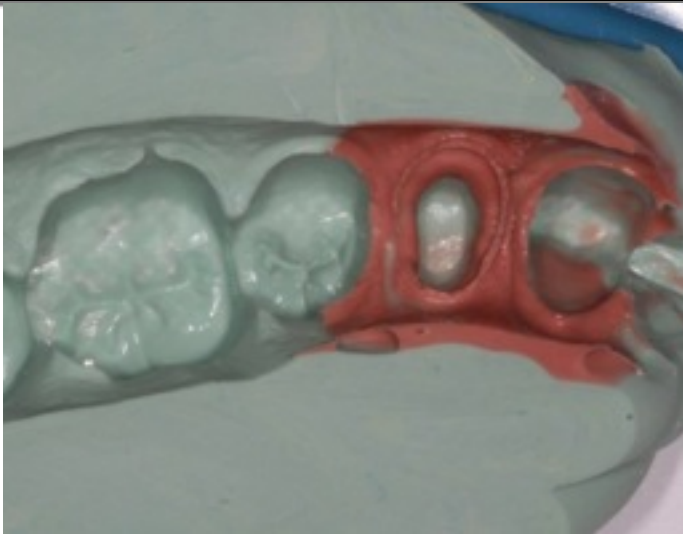
Better Mounting - Better Crowns



PRECISION
DENTAL ARTS

208-733-0383

www.precision-dental-arts.com



What is required...

- **Properly prepared tooth**
- **Rigid Interocclusal Record Material** (example...Blue Mousse - fast set, 30 sec)
- **Interocclusal Record X2**
 - Insert enough material onto the prepared tooth to record the opposing occlusal/incisal surfaces
 - Teach your assistant to do this step to save you time.
- **Trim the Record**
 - Remove the excess and any of the replicated occlusal grooves (all that is needed is the prep and the cusp tips of the opposing
 - You can also let your lab trim the records
- **Photograph of the teeth in contact**

Concept Explanation...

The concept is: provide the lab with a **Verification Record** of the patient's teeth articulation.

Providing your lab with simple accurate verification inter-occlusal records will allow your lab to ensure they have an accurately articulated die, which in turn allows them to make a crown that will require less adjustments upon insertion. Saving you time and money.



PRECISION
DENTAL ARTS