

Digital Dentures

Workflows and Restorative Options

The Lab That Makes The Difference



www.precision-dental-arts.com

www.3dprecisiondigital.com

800-574-0721

Digital Denture Options

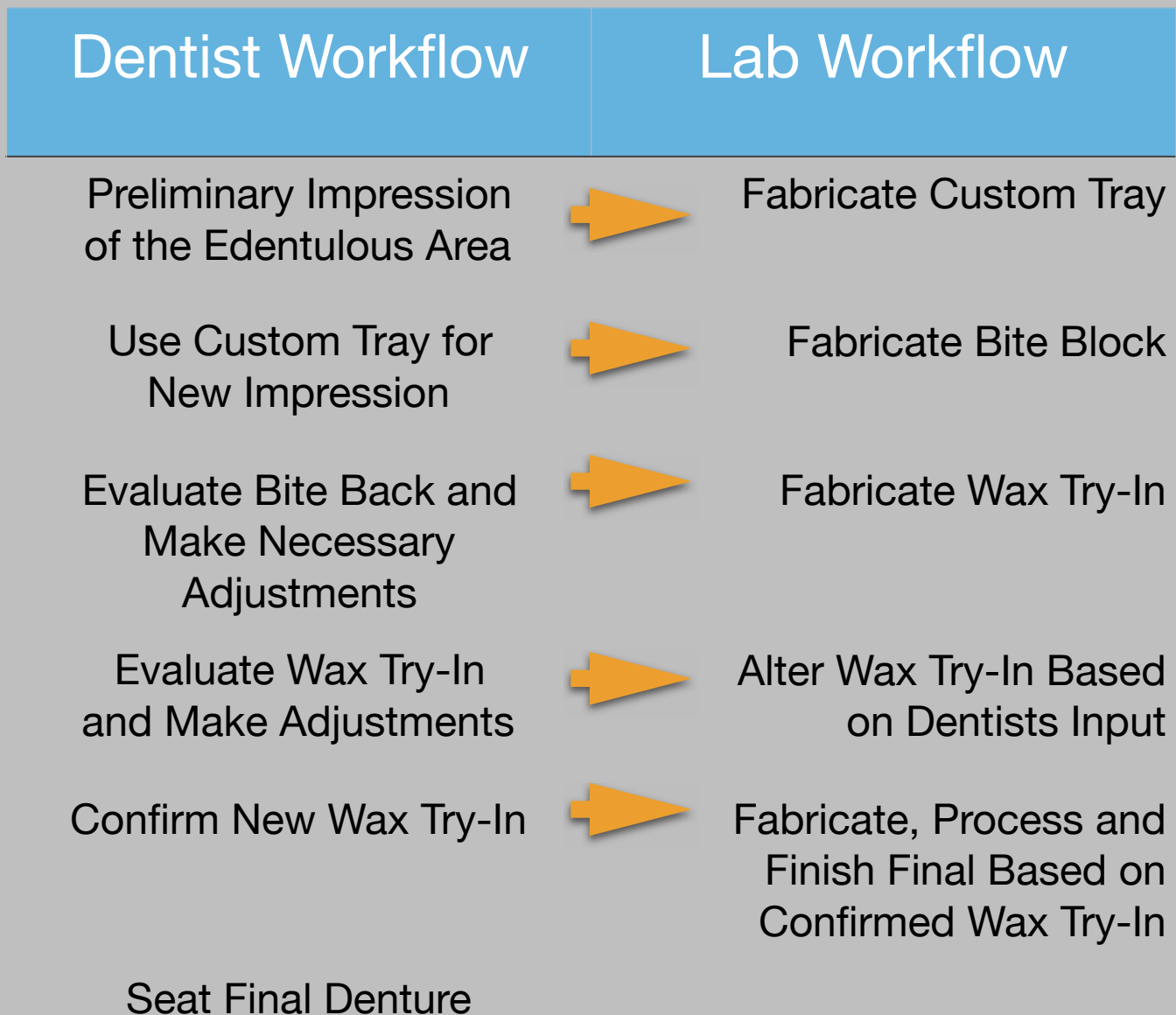
- **Precision Digital Denture Complete (Milled base and Milled Teeth) \$499.00
- **Precision Digital Denture Complete (Milled base and Printed Teeth) \$469.00
- Precision Digital Denture Immediate Complete \$449.00
- **Precision Monolithic Digital Denture Complete \$429.00

**includes bite block, articulation, printed try in, and digital setup, milled or printed final denture with our Precision detailed festoon and finishing.



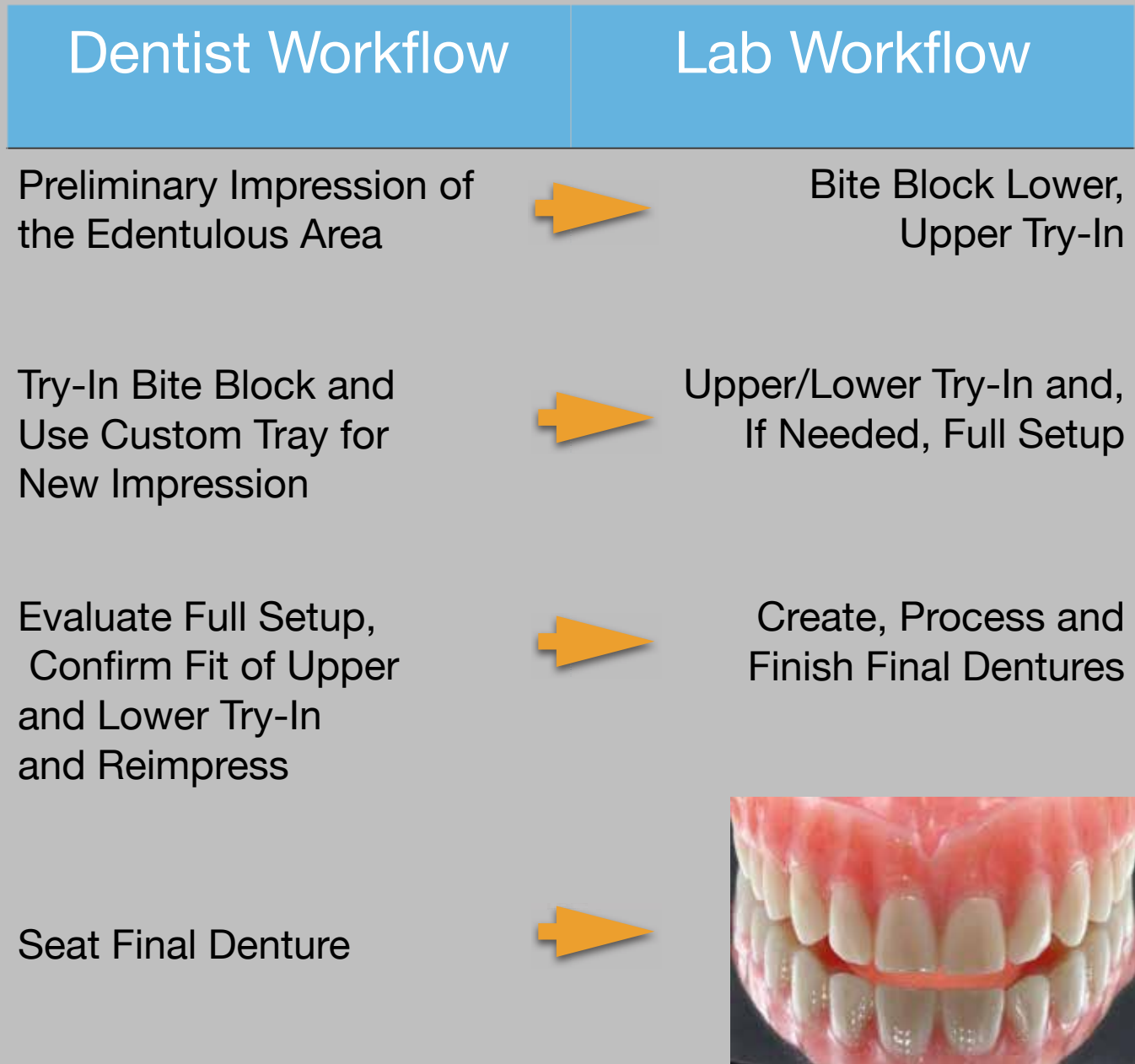
Traditional Denture Workflow

A typical workflow for traditional dentures requires six or more appointments due to the necessary try-in and reset appointments. Nearly 50 percent of these cases require a reset appointment.



Optional Cad/Cam Denture Workflow

If a clinician does not deliver a bite registration and requires an extended workflow, it can take as many as five appointments. Less than 25 percent of cases require a reset appointment.



Optional Cad/Cam Denture Workflow

The optimal CAD/CAM denture workflow requires only three chair-side appointments.

Dentist Workflow

Lab Workflow

Preliminary Impression
of the Edentulous Area



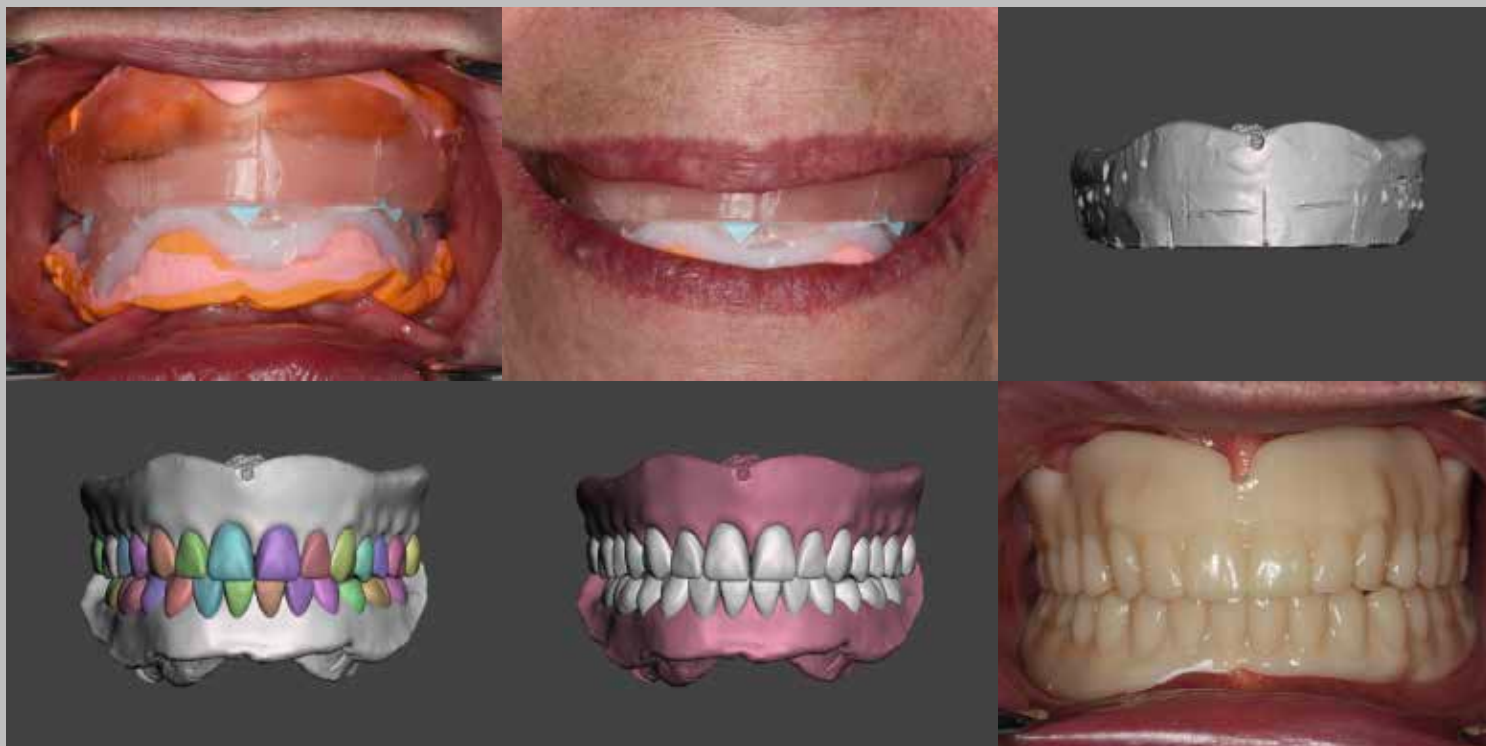
Create 3-D Printed Bite
Block/ and or Try-in from
Preliminary Impression

Take Bite Registration,
Try-In Bite Block, and
Use as a Custom Tray for
Final Impression



Create, Process
and Finish Final
Denture Based on
3-D-Printed Try-In

Seat Final Denture



Digital Denture Impression Procedure - Conventional

PRE-APPOINTMENT INSTRUMENTS AND SUPPLIES

- Exam Instrument pack
- Large stack gauze
- Timer
- Adhesive
- Long piece of floss
- Low volume suction
- One air-water syringe tip (plastic bag covers)
- Heavy Material (PVS) and tips
- Light Wash Material (PVS) and tips
- Bite registration material and tips
- 3 Impression Guns
- 1 plastic brush (for adhesive)
- Lab blade and fine scissors
- Tongue blade
- Torch
- Lighter
- Wax spatula
- Marker
- Camera

PRE-OPERATIVE TASKS

- “Have there been any changes to your health or medicines”?
- Ask Doctor if opposing impressions are needed for this patient: _____
- Have ready the wax rims and custom trays

APPOINTMENT TASKS - AFTER IMPRESSION MATERIAL HAS BEEN ADDED TO WAX RIMS

- Take full face photo; profile; up close smile photos (all photos should show closed mouth, repose/slightly open, smile, and BIG smile)
- Shape the wax rims to develop correct:
 - Vertical dimension
 - Incisal edge position
 - Lip support
 - Mediolateral esthetic angle
- Mark the wax rims:
 - Midline
 - Canine lines
 - High smile line
- Shade : _____
- Gingiva shade: circle one LIGHT ORIGINAL LIGHT REDDISH PINK DARK PINK
- Patient preferences: Does the patient want a set up similar to their denture? What changes do they want?

-
- Class I, II, III, unilateral cross estimates: _____

Digital Preview Evaluation

CLICK ON AND OFF THE "REFERENCE" VISIBILITY

1. Check the pink bases first for correct extensions and border thickness
 - Post palatal seal position?
 - Rugae present or not?
2. Verify changes requested from appointment notes
3. Check midline
4. Evaluate for a cant
5. Evaluate tooth size and shape - do posterior teeth match anterior?
6. Is the occlusal scheme appropriate?
 - Are the mandibular incisors out past the depth of the vestibule?
 - Is cross occlusion needed?
7. Do any teeth need excluded?

CLICK ON THE VIEW PRESETS AT BOTTOM

8. SUPERIOR VIEW of mandible only - Line from mesial of canine to the lingual of retromolar pad (lingual cusps should follow this line)
9. SAGITTAL VIEW of mandible only - Line from cusp tip of canine to 1/2 retromolar pad (posterior mandibular teeth cusps should follow this line or sink slightly below it)
10. SUPERIOR VIEW of maxilla - Facial surface of maxillary incisors is about 8-9mm from the center of the incisive papilla
11. ANTERIOR VIEW of maxilla - Middle of the incisal edge of the central incisor to the edge of the vestibule measures about 22mm
12. ANTERIOR VIEW of mandible only - Middle of the incisal edge of the central incisor to the edge of the vestibule measures about 18mm

**Digital Preview Evaluation and the Digital Denture Impression Procedure checklist created by Dr. Valerie Cooper (the Denture Queen) and used with her permission.

www.precision-dental-arts.com
www.3dprecisiondigital.com



PRECISION
DENTAL ARTS

WE BELIEVE IN MAKING SENSE
OUT OF THE COMPLICATED OR
CHALLENGING THROUGH
PERSONAL INTEGRITY AND
TEAM EXCELLENCE.



All products manufactured in North America.

All fees subject to change without notice.

Accounts not paid within the stated terms will be subject to COD status and a service charge of 1.5% per month on overdue accounts may apply.

NEW Priority Service - For Priority rush cases, an additional fee may be assessed.

For pickup of cases, please call us at 800-574-0721. For cases under \$500.00, may have a shipping charge of \$7.00 applied to out-going packages.

For a no charge invoice, a \$20.00 technical service may apply

Contact Precision Dental Arts for complete details:

800-574-0721

precision-dental-arts.com
3dprecisiondigital.com



PRECISION
DENTAL ARTS

3DP
DIGITAL PRECISION